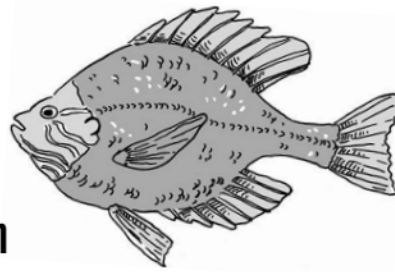


BIG FISH

Ecosystem Cards
Page 1

Big Fish



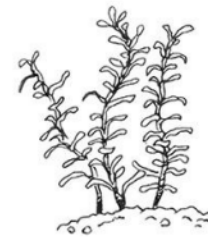
+6

carbon
dioxide
points

A Big Fish needs:

- at least 3 Big Fish Foods and 2 Decomposers
- a healthy carbon dioxide level

Underwater Plants (Producers)

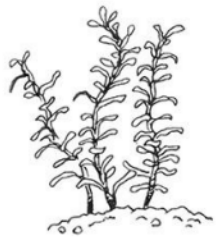


-3

carbon
dioxide
points

These plants take all their carbon dioxide from the water.

Underwater Plants (Producers)



-3

carbon
dioxide
points

These plants take all their carbon dioxide from the water.

Phytoplankton (Producer)



-2

carbon
dioxide
points

These microscopic plants take carbon dioxide from the water.

Phytoplankton (Producer)

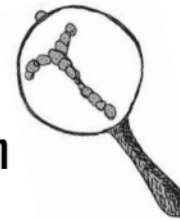


-2

carbon
dioxide
points

These microscopic plants take carbon dioxide from the water.

Phytoplankton (Producer)

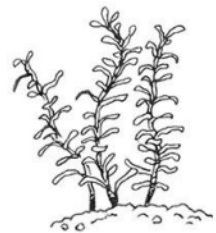


-2

carbon
dioxide
points

These microscopic plants take carbon dioxide from the water.

Underwater Plants (Producers)



-3

carbon
dioxide
points

These plants take all their carbon dioxide from the water.

Fungi (Decomposers)

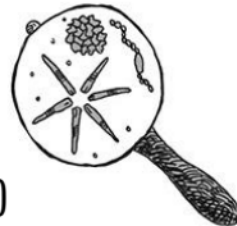


+3

carbon
dioxide
points

Fungi break down fish waste to make carbon dioxide and nutrients.

Fungi (Decomposers)



+3

carbon
dioxide
points

Fungi break down fish waste to make carbon dioxide and nutrients.

Bacteria (Decomposers)



+3

carbon
dioxide
points

Bacteria break down fish waste to make carbon dioxide and nutrients.

Bacteria (Decomposers)



+3

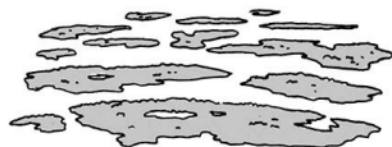
carbon
dioxide
points

Bacteria break down fish waste to make carbon dioxide and nutrients.

BIG FISH

Ecosystem Cards

Page 2



Algae (Producers)

-3
carbon
dioxide
points

Algae take all their carbon dioxide from the water.

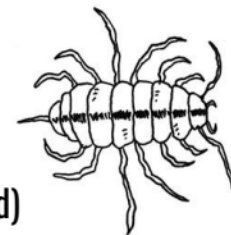


Algae (Producers)

-3
carbon
dioxide
points

Algae take all their carbon dioxide from the water.

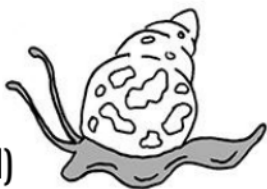
Aquatic Sowbugs (Big Fish Food)



+1
carbon
dioxide
points

Your pond needs plants, algae, or phytoplankton for these aquatic sowbugs to eat.

Snails (Big Fish Food)



+2
carbon
dioxide
points

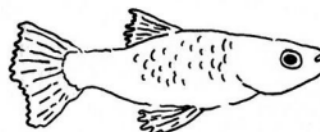
Your pond needs plants, algae, or phytoplankton for these snails to eat.



Tadpoles (Big Fish Food)

+2
carbon
dioxide
points

Your pond needs plants, algae, or phytoplankton for these tadpoles to eat.

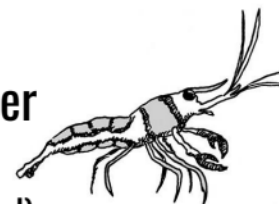


Guppies (Big Fish Food)

+2
carbon
dioxide
points

Your pond needs plants, algae, or phytoplankton for these guppies to eat.

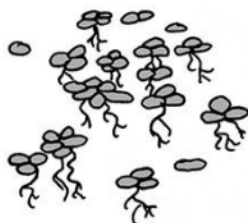
Freshwater Shrimp (Big Fish Food)



+2
carbon
dioxide
points

Your pond needs plants, algae, or phytoplankton for these shrimp to eat.

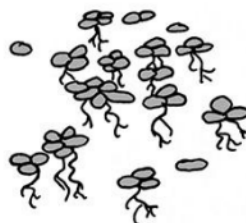
Duckweed (Producer)



-1
carbon
dioxide
points

This floating plant takes carbon from the air as well as the water.

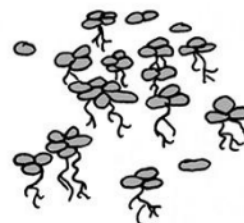
Duckweed (Producer)



-1
carbon
dioxide
points

This floating plant takes carbon from the air as well as the water.

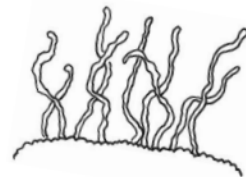
Duckweed (Producer)



-1
carbon
dioxide
points

This floating plant takes carbon from the air as well as the water.

Sludge Worms (Big Fish Food)



+1
carbon
dioxide
points

Your pond needs fish waste for these worms to eat.