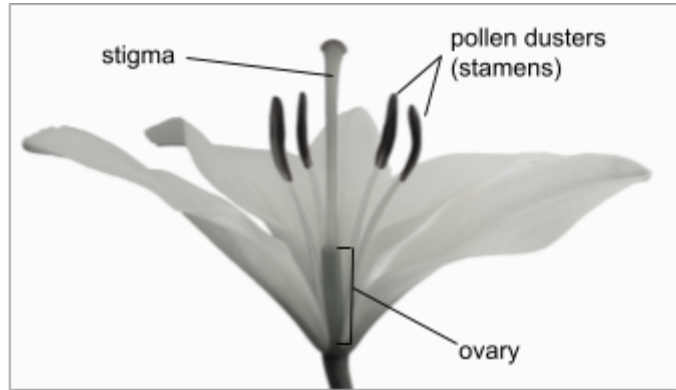


FLOWER DISSECTION

The flower you are taking apart may not look exactly like this one. But your flower will have the same parts as this lily.



Step 1: Petals

Pull off the flower's petals. Put them in box 1 on the Operating Table.

Count the petals and write the number here: _____

Do all the petals look the same? (circle your answer) Yes No

Step 2: Pollen

Find the pollen dusters. Each one is a long stem topped with a knob. The pollen is on that knob. Touch the top of a pollen duster. Do you see colored dust on your finger? That's pollen. Pull the pollen dusters off and put them in box 2 of the Operating Table.

Step 3: Stigma

Find the stigma. It's in the center of the flower. Touch the top to some pollen.

Does pollen stick to it? (circle your answer) Yes No

The top part of the stigma is a tube that lets pollen reach the ovary.
The bottom part is the ovary, where the eggs are.

Break the top of the stigma off the ovary and put it in box 3 of the Operating Table.



Step 4: Ovary

Slice the ovary open by cutting across it.

Can you see any eggs inside? If you have a magnifying glass, use it to get a better look. Then draw what you see.

Put the ovary in box 4 on the Operating Table.

Draw here what you see
in the ovary.