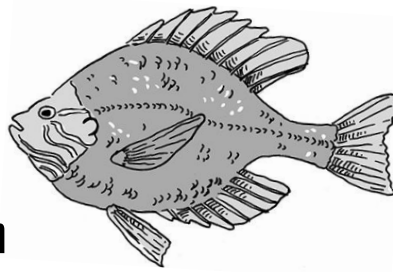


## BIG FISH

Ecosystem Cards  
Page 1

### Big Fish



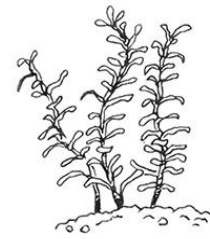
+6

carbon  
dioxide  
points

#### A Big Fish needs:

- at least 3 Big Fish Foods and 2 Decomposers
- a healthy carbon dioxide level

### Underwater Plants (Producers)



-3

carbon  
dioxide  
points

These plants take all their carbon dioxide from the water.

### Underwater Plants (Producers)



-3

carbon  
dioxide  
points

These plants take all their carbon dioxide from the water.

### Phytoplankton (Producer)

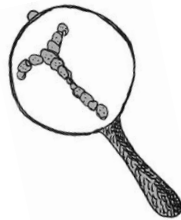


-2

carbon  
dioxide  
points

These microscopic plants take carbon dioxide from the water.

### Phytoplankton (Producer)



-2

carbon  
dioxide  
points

These microscopic plants take carbon dioxide from the water.

### Phytoplankton (Producer)



-2

carbon  
dioxide  
points

These microscopic plants take carbon dioxide from the water.

### Underwater Plants (Producers)



-3

carbon  
dioxide  
points

These plants take all their carbon dioxide from the water.

### Fungi (Decomposers)

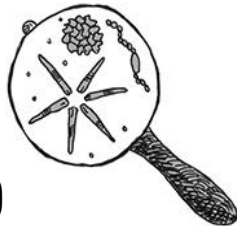


+3

carbon  
dioxide  
points

Fungi break down fish waste to make carbon dioxide and nutrients.

### Fungi (Decomposers)



+3

carbon  
dioxide  
points

Fungi break down fish waste to make carbon dioxide and nutrients.

### Bacteria (Decomposers)



+3

carbon  
dioxide  
points

Bacteria break down fish waste to make carbon dioxide and nutrients.

### Bacteria (Decomposers)



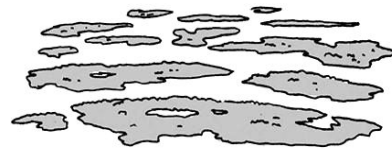
+3

carbon  
dioxide  
points

Bacteria break down fish waste to make carbon dioxide and nutrients.

# BIG FISH

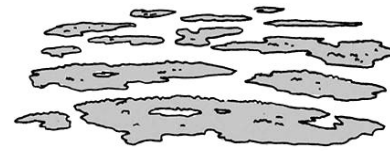
Ecosystem Cards  
Page 2



**Algae (Producers)**

**-3**  
carbon  
dioxide  
points

Algae take all their  
carbon dioxide  
from the water.

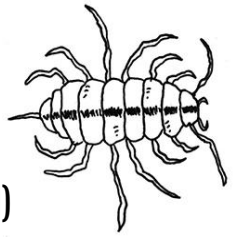


**Algae (Producers)**

**-3**  
carbon  
dioxide  
points

Algae take all their  
carbon dioxide  
from the water.

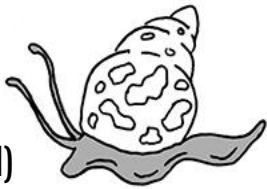
**Aquatic  
Sowbugs**  
(Big Fish Food)



**+1**  
carbon  
dioxide  
points

Your pond needs  
plants, algae, or  
phytoplankton for  
these aquatic  
sowbugs to eat.

**Snails**  
(Big Fish Food)



**+2**  
carbon  
dioxide  
points

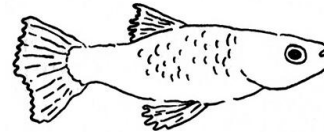
Your pond needs  
plants, algae, or  
phytoplankton for  
these snails to eat.



**Tadpoles** (Big Fish Food)

**+2**  
carbon  
dioxide  
points

Your pond needs  
plants, algae, or  
phytoplankton for  
these tadpoles to  
eat.

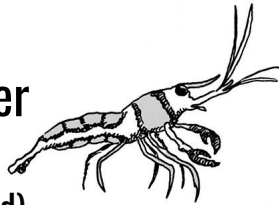


**Guppies** (Big Fish Food)

**+2**  
carbon  
dioxide  
points

Your pond needs  
plants, algae, or  
phytoplankton for  
these guppies to  
eat.

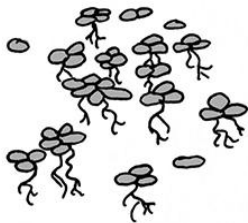
**Freshwater  
Shrimp**  
(Big Fish Food)



**+2**  
carbon  
dioxide  
points

Your pond needs  
plants, algae, or  
phytoplankton for  
these shrimp to  
eat.

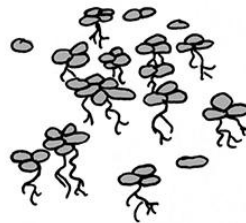
**Duckweed**  
(Producer)



**-1**  
carbon  
dioxide  
points

This floating plant  
takes carbon from  
the air as well as  
the water.

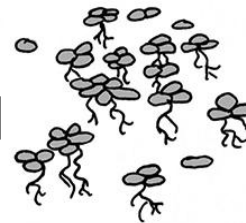
**Duckweed**  
(Producer)



**-1**  
carbon  
dioxide  
points

This floating plant  
takes carbon from  
the air as well as  
the water.

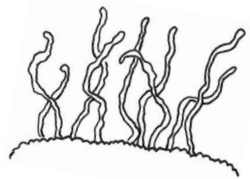
**Duckweed**  
(Producer)



**-1**  
carbon  
dioxide  
points

This floating plant  
takes carbon from  
the air as well as  
the water.

**Sludge  
Worms**  
(Big Fish Food)



**+1**  
carbon  
dioxide  
points

Your pond needs  
fish waste for  
these worms to  
eat.